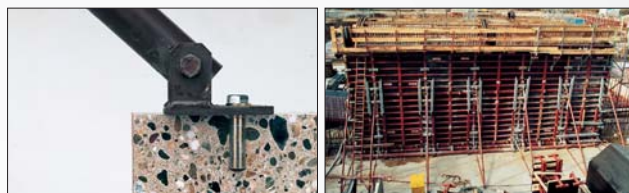


Technical Data Sheet (Version 1. 2025)

SF Drop In Anchors

DESCRIPTION

- SF Drop In Anchor with internal thread for pre-positioned installation.
- When the expander cone is driven in with EAW H Plus setting tool, the anchor sleeve is expanded and is pressed against the hole wall.



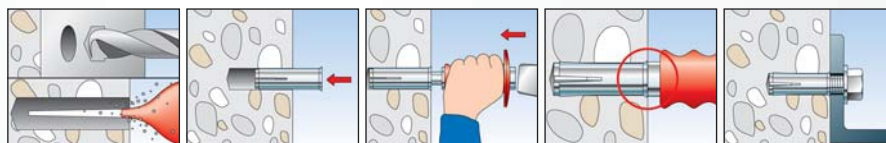
Advantages/benefits

- Suitable for non-cracked concrete and for anchoring light ceiling linings and suspended ceilings.
- Suitable for all screws or studs with metric threads.
- Low anchoring depth reduces drilling time and thus cost-efficient installation.
- Surface-flush anchor allows the attached item to be removed and refitted several times.

INSTALLATION

Type of installation

- Pre-positioned installation



OVERVIEW



SF Drop In Anchor

Suitable for:

- Non-cracked concrete C12/15
- Natural stone with dense structure

For fixing of:

- non-safety relevant fixings only

Art.No.	Type	Drill	Effect. Anchoring Depth	Threaded Dia	Maximum torque	Recommended load	Quantity Per Box
SFDA11201	6x25	8	25	6	4	1.65	100
SFDA11202	8x30	10	30	8	8	2.3	100
SFDA11203	10x40	12	40	10	15	4.2	50
SFDA11204	12x50	15	50	12	35	5.8	50
SFDA11205	16x65	20	65	16	60	7.7	25
SFDA11206	20x80	25	80	20	120	10.5	25